



# GAT MONTHLY MEMBERSHIP PROGRESS REPORT

Results as of: 10/31/2023

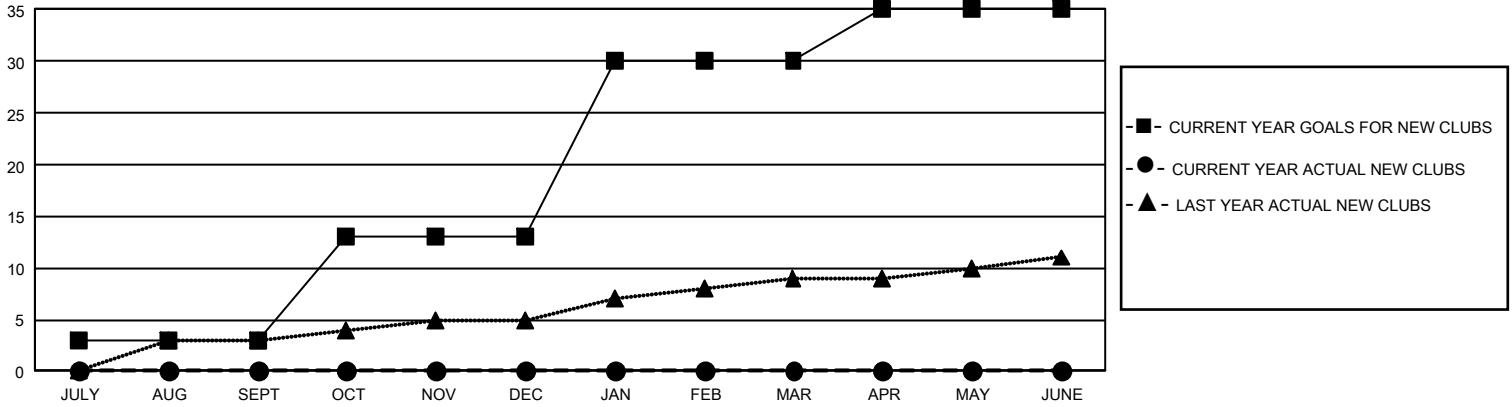
## GMT Constitutional Area 1, Group F

REPORT DOES NOT INCLUDE CLUBS IN UNDISTRICTED AREAS.

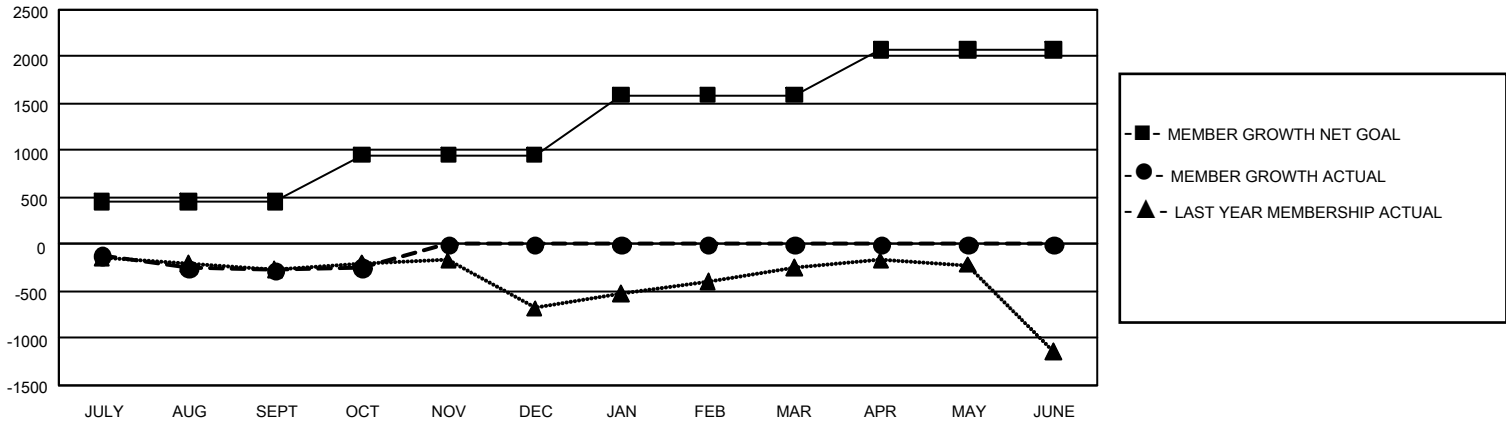
Clubs			
RESULTS FOR 2023-2024			
QUARTER	NEW CLUB GOAL	NEW CLUBS	DROPPED CLUBS
JULY/AUG/SEPT	9	0	7
OCT/NOV/DEC	30	0	5
JAN/FEB/MAR	51	0	0
APR/MAY/JUNE	15	0	0

Members			
RESULTS FOR 2023-2024			
QUARTER	MEMBER GROWTH NET GOAL	MEMBER GROWTH ACTUAL	DROPPED MEMBERS ACTUAL (including transfers)
JULY/AUG/SEPT	453	869	1,036
OCT/NOV/DEC	500	366	315
JAN/FEB/MAR	638	0	0
APR/MAY/JUNE	487	0	0

GOALS AND ACTUAL NEW CLUBS CUMULATIVE



GOALS AND ACTUAL MEMBERS CUMULATIVE



<b>DROPPED CLUBS: 12</b>  <b>DROPPED MEMBERS</b> DECEASED 212 CLUB CANCELLED 55 OTHER 1,085 <b>TOTAL 1,352</b>	458 CLUBS OF 1,402 ADDED 1 OR MORE NEW MEMBERS	<b>GENDER DISTRIBUTION</b> MALE 23,817 (60.47%) FEMALE 15,549 (39.48%) NON BINARY 0 (0.00%) PREFER NOT TO ANSWER 19 (0.05%)
	<a href="#">CLICK HERE FOR CUMULATIVE MEMBERSHIP DATA</a>	TOTAL FAMILY UNIT MEMBERS 7,600 FAMILY MEMBERS PAYING HALF DUES 3,950